

WELCOME

METAL DETECTING ENTHUSIASTS!



To maintain Park District grounds and facilities and to ensure your safety, please read and fully cooperate with the Rockford Park District Metal Detecting Rules and Regulations listed below.

RULES AND REGULATIONS

- All detected items must conform to proper removal procedure (see "How to Dig a Hole!" instructions).
- Carry a small plastic sheet as one of your tools. Lay any earth removed from the hole on this sheet for easy return to the hole.
- No shrub, tree, or flower may be destroyed when detecting for metal objects.
- Useless detected items must be disposed of properly. Use the park's waste cans if possible.
- Metal detector users must observe all other Park District regulations when using any park grounds.
- Metal detecting cannot interfere with another park activity, planned or unplanned.
- Metal detector users must cooperate fully with all park personnel and all law officers.
- Metal detector users must have their permit on their person when metal hunting. The permit must be shown to park personnel or law officers upon request.
- Metal detecting permits may be revoked by Rockford Park District personnel and must be surrendered upon request.
- Metal detecting permits are issued for a period of one year only.



We welcome the opportunity to assist guests with disabilities to enjoy ALL our facilities, programs, and services. For assistance and information on accessibility, call 815-987-8800.

Revised 12/2016



BOARD OF COMMISSIONERS
Jack L. Armstrong • Julie Elliott • Ian K. Linnabary
Scott Olson • Tyler Smith
EXECUTIVE DIRECTOR Tim Dimke

METAL DETECTING



METAL DETECTING FORM

PARTICIPANT INFORMATION

HH ID# _____

First Name _____

Last Name _____

Address _____

City _____

State _____ ZIP _____

Home Phone _____

Birthdate / / Age _____

Male Female

E-mail Address _____

EMERGENCY INFORMATION

Please list any person(s) we should contact in the event of any emergency.

Name _____

Phone # _____

Relationship _____

Name _____

Phone # _____

Relationship _____

I have read and I understand the Rockford Park District Metal Detecting Rules and Regulations.

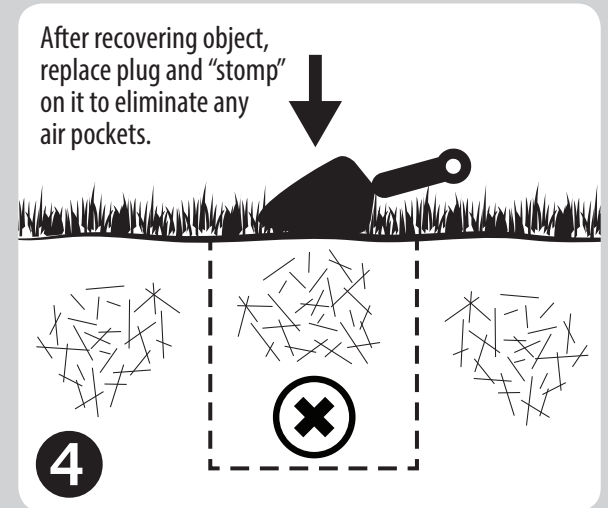
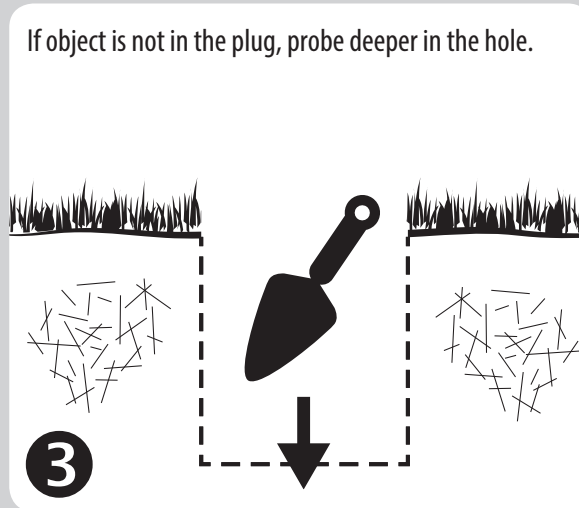
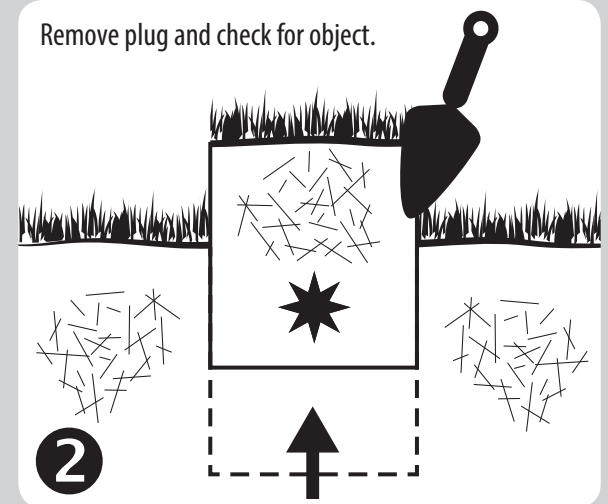
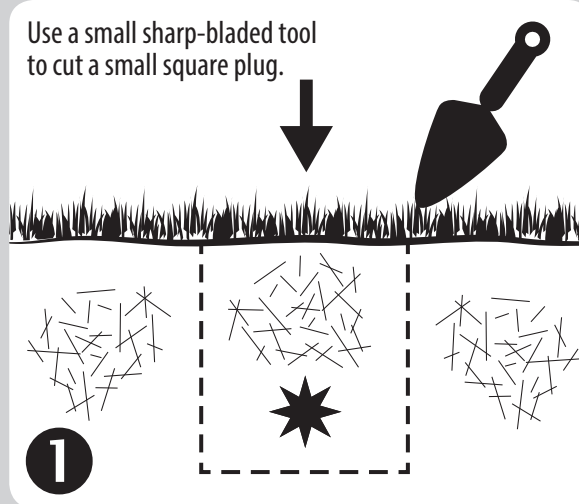
Signature _____

Date _____

FEE	<input type="checkbox"/> \$10 for non-residents	<input type="checkbox"/> \$7 for residents
------------	---	--

How to Dig a Hole!

NOTE: Before you dig, make sure you have pinpointed your object.



METAL DETECTING IS PROHIBITED AT:

Alpine Hills Adventure Park
4402 Larson Ave
Rockford, IL

Atwood Park
2685 New Milford
School Road
Rockford, IL

Ekberg-Pine Manor Park
3800 Balsam Lane
Rockford, IL

Beattie Park
401 N Main St
Rockford, IL

Aldeen, Elliot, Ingersoll, Sandy Hollow, and Sinnissippi Golf Courses

Mercyhealth Sportscore One and Mercyhealth Sportscore Two

HCC Sports Complex
9400 Forest Hills Rd
Loves Park, IL

Standfield Beach at Levings Park
1420 S Pierpont Av
Rockford, IL